

## FLIGHT CASE



- The Proel flight case is the highest expression in protection technology for resistance to shock and damage, ease of transport and use, durability against wear and tear, and attractive design. The choice of the highest quality materials and production technology are combined with the guarantee of quality assured by hand-assembly to give the maximum in reliability and the capability of customized products. The capacity and organization of PROEL is world renown for responding to every need with products constructed ad hoc, even single units, with incomparable swiftness (on request, even Standard Line cases can be customized).

## FLIGHT CASE



- On this page are reproduced images of some exemplifying models of the internal production of flight-cases, together with some custom creations. The primary objective that Proel arises in the sector of cases, is to meet the demands of the end user on the more complex equipment to be stored.

All this is made possible through the use of technologically advanced machinery, developed with the construction companies based on the requirements derived from specific processes of flight-cases production. The design of many variants of cases is also made with the help of dedicated software, used by our technicians to find appropriate solutions for the requests of production, both custom and standard. Added value is given by the use of semi-finished products and raw materials of high quality, and the recognition of a high know-how derived from the continuous cooperation relationship with major customers worldwide. These are elements that allow PROEL to design, propose and implement suitable flight-cases for every type of product to be transported.

CUSTOM MODEL EXAMPLE

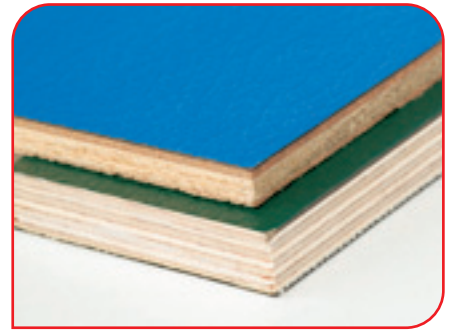
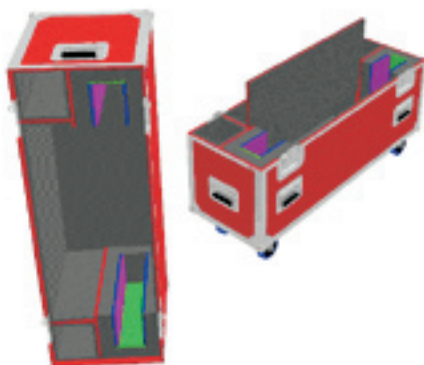
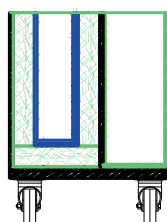
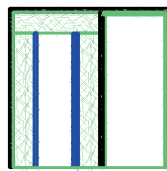
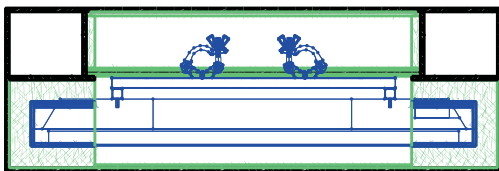
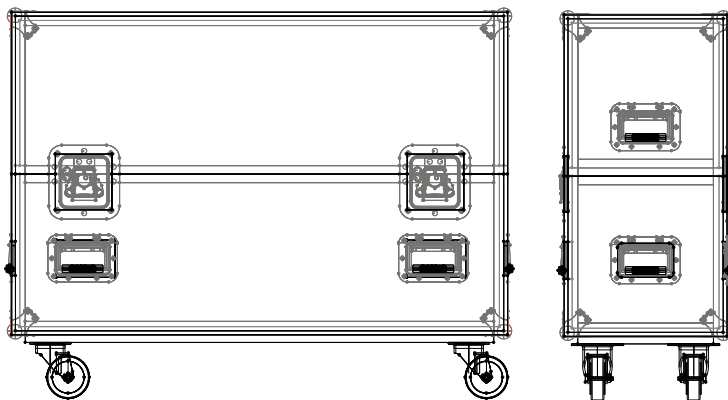


CUSTOM MODEL EXAMPLE

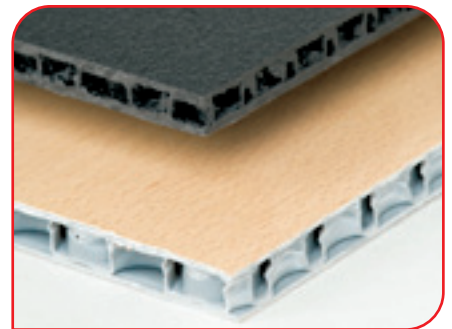


## FLIGHT CASE

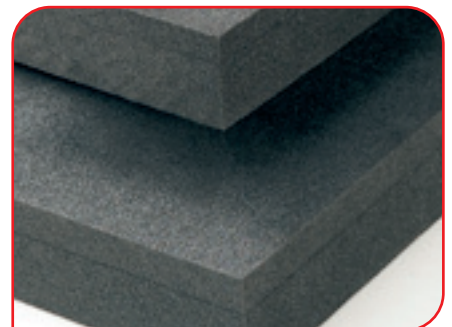
• On this page are shown some examples for the design and simulation of the artifact in CAD/CAM, and a list of some of the main materials used for the construction of flight-cases, with reference to the plywood, the polymeric materials, the padding and outer covering. The wood used is one of the most important elements in the production of flight-cases. PROEL uses mainly phenolic-bond marine plywood, covered with highly resistant laminate, which appears to be far more lasting than the common plywood on the market. In addition to the plywood, polymeric materials are chosen which, thanks to their specific low weight, allow the creation of cases with a good level of resistance, particularly suitable in cases of air transport, which is greatly affected by the weight variant. Another important aspect is the use of inner lining suitable for transport equipment, such as polyethylene foam of different hardness and durability, designed and shaped to the specific requirements in order to avoid any shock to the content of flight-cases.



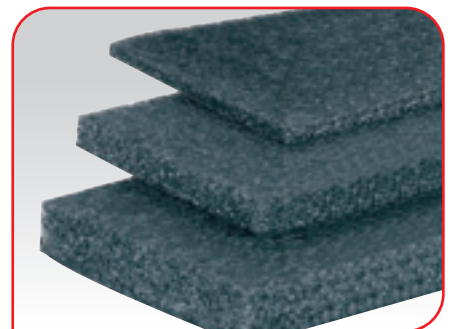
• Marine pine and / or birch plywood.



• Polymeric materials with low specific gravity

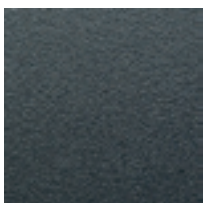


• High density Ethafoam.



• Adhesive polyethylene foam.

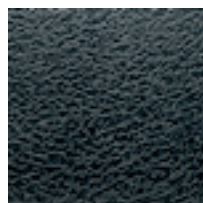
## RANGE OF FINISHES



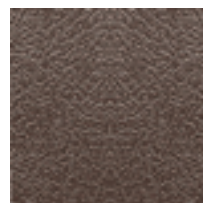
• Standard Black



• High-grade Red



• High-grade Black



• High-grade Brown



• High-grade Blue



• High-grade Green



*Sector Index***FLIGHT CASES**

19" STANDARD RACK CASES - "BLKM" 100 SERIES	251
19" PROFESSIONAL RACK CASES - "BLKM" 200 SERIES	252
19" PROFESSIONAL RACK CASES WITH WHEELS - "BLKMW" 200 SERIES	253
19" PRO FOAM SUSPENDED RACK CASES WITH WHEELS	
- "BLKMW 400" SERIES	254
19" PROFESSIONAL "COMBO" RACK CASES - "BLKM" SERIES	255
19" PROFESSIONAL "COMBO" RACK CASES WITH WHEELS - "BLKM" SERIES	256
19" STANDARD RACK CASES - "SPECIAL" SERIES	257
19" PROFESSIONAL RACK CASES - "PROFESSIONAL" SERIES	258
19" PROFESSIONAL RACK CASES WITH WHEELS	
- "PROFESSIONAL" SERIES	259
19" PROFESSIONAL RACK CASES WITH STACKING SYSTEM	
- "PROFESSIONAL" SERIES	260
19" PROFESSIONAL RACK CASES WITH ANTISHOCK STEEL FRAME - "TOP" SERIES	261
19" PROFESSIONAL RACK CASES WITH INNER WOODEN SHELL	
- "TOP" SERIES	261
19" PROFESSIONAL RACK CASES WITH ANTISHOCK STEEL FRAME - "TOP" SERIES	262
19" STANDARD RACK CASES - "RECORDING STUDIO" SERIES	263
19" RACK HEIGHT ADJUSTABLE MIXER CASE - "BLK" SERIES	263
KEYBOARD CASES - "SPECIAL" SERIES	264
KEYBOARD CASES - "PROFESSIONAL" SERIES	264
KEYBOARD CASES - "BLKMW" SERIES	265
MIXER CASES - "SPECIAL" SERIES	266
MIXER CASES - "PROFESSIONAL" SERIES	266
MICROPHONE STAND CASE - "PROFESSIONAL" SERIES	267
MICROPHONE CASES - "BLK" SERIES	267
CABLE DRUM CASES - "PROFESSIONAL" SERIES	268
DRUM CASES - "PROFESSIONAL" SERIES	269
PROFESSIONAL STORAGE CASES - "BLKW" SERIES	270
MULTIFUNCTIONAL CASES - "BLK" SERIES	270
PROFESSIONAL STORAGE CASES - "PROFESSIONAL" SERIES	271
MULTIFUNCTIONAL CASE - "TOP" SERIES	271
PROFESSIONAL LCD/PLASMA CASES - "BLKW" SERIES	272
AMPLIFIERS & SPEAKER CABINETS - "PROFESSIONAL" SERIES	273
DJ CASES - "COFFIN" SERIES	274
DJ CASES - "PROFESSIONAL COFFIN" SERIES	276
DJ CASES - PROFESSIONAL TURNTABLE CASE	277
DJ CASES - "COMBO BLK" SERIES	277
DJ CASES - MIXER CASES	278
DJ ACCESSORIES - LAPTOP STAND	278
DJ ACCESSORIES - "COMBO BLK" SERIES	279
DJ CASES - CDJ PLAYER AND MIXER	279
DJ CASES - LP CASES	280
DJ CASES - CD CASES	281
DJ CASES - TURNTABLE CASES	281
DJ CASES - LP AND MICROPHONES CASES	282
MULTIFUNCTIONAL CASES - "SD" SERIES	283

## 19" STANDARD RACK CASES "BLKM" 100 Series

- 19" standard rack cases, 5-ply phenolic-bond marine plywood constructions, 8Wmm thickness. Black laminated water and scratch-resistant covering. Black inner painted. Provided with small steel surface butterfly twist latches, surface handles (spring loaded), steel ball-corner, professional aluminium profile and industrial grade rubber feet. Standard rack rails in the front and numbers of install rack rail screws, washers, cage nuts are included. - 33 cm. rackable depth.



CR102BLKM

CR108BLKM

CR106BLKM

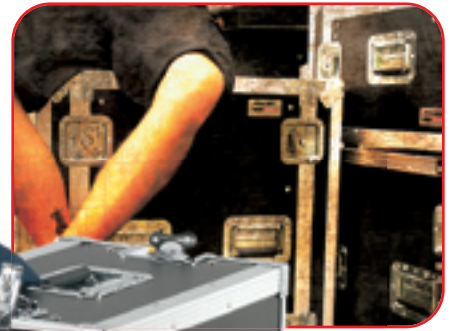
CR104BLKM

33 CM RACKABLE DEPTH  
FRONT SINGLE RACK RAILS

TECH INFO		
CODE	UNIT	WEIGHT
CR102BLKM	2U	6.90 kg
CR103BLKM	3U	7.75 kg
CR104BLKM	4U	8.65 kg
CR105BLKM	5U	9.40 kg
CR106BLKM	6U	10.10 kg
CR108BLKM	8U	12.20 kg

## 19" PROFESSIONAL STANDARD RACK CASES "BLKM" 200 Series

• 19" Professional rack cases, made by 5-Ply, phenolic-bond marine plywood, 9 mm thickness. Black laminated water and scratch-resistant covering. Black inner painted. Provided with recessed steel galvanized butterfly latches, recessed spring-loaded handles with rubber grip, steel ball-corner and stiffener, professional aluminium profile and industrial grade rubber feet. Front and rear double rack rails and numbers of install rack rail screws, washers, cage nuts are included. 45 cm rackable depth. Front and back lids foamed eggs sheet foam and mounted velcro straps for manage cables and accessories.



CR206BLKM

TECH INFO		
CODE	UNITS	WEIGHT
CR202BLKM	2U	8.50 kg
CR203BLKM	3U	9.95 kg
CR204BLKM	4U	11.30 kg
CR205BLKM	5U	12.00 kg
CR206BLKM	6U	12.80 kg
CR208BLKM	8U	16.50 kg
CR210BLKM	10U	20.50 kg

45 CM RACKABLE DEPTH  
FRONT AND REAR DOUBLE RACK RAILS

CR208BLKM



CR202BLKM



CR204BLKM

CR206BLKM

## 19" PRO STANDARD RACK CASES WITH WHEELS "BLKMW" 200 Series

- 19" Professional rack cases with 100 mm blue industrial style wheels (two with brakes). Made by 5-Ply, phenolic-bond marine plywood, 9mm thickness. Black laminated water and scratch-resistant covering. Black inner painted. Provided with recessed steel galvanized butterfly latches, recessed spring-loaded handles with rubber grip, steel ball-corner and 6 holes brace, professional aluminium profile and industrial grade rubber feet. Front and rear double rack rails *and numbers of install rack rail screws, washers, cage nuts are included.* 45 cm rackable depth. Galvanized steel reinforced side bars. *Front and back lids foamed eggs sheet foam and mounted velcro straps for manage cables and accessories.*



CR215BLKMW

CR224BLKMW



CR212BLKMW

45 CM RACKABLE DEPTH  
FRONT AND REAR DOUBLE RACK RAILS  
100 MM BLUE INDUSTRIAL WHEELS

TECH INFO		
CODE	UNITS	WEIGHT
CR210BLKMW	10U	27.00 kg
CR212BLKMW	12U	30.50 kg
CR215BLKMW	15U	32.50 kg
CR218BLKMW	18U	39.50 kg
CR224BLKMW	24U	45.50 kg



## 19" PRO FOAM SUSPENDED RACK CASES WITH WHEELS "BLKMW 400" Series

• 19" Professional "FOAM SUSPENDED" rack cases have an added protection against blows and falls. Made by 5-Ply, phenolic-bond marine plywood, 9 mm thickness. Black laminated water and scratch-resistant covering. Black inner painted. Provided with recessed steel galvanized butterfly latches, recessed spring-loaded handles with rubber grip, steel ball-corner and stiffener, professional aluminium profile and industrial grade rubber feet. Front and rear double rack rails *and numbers of install rack rail screws, washers, cage nuts are included.* 50cm rackable depth. Galvanized steel reinforced side bars. *Front and back lids foamed eggs sheet foam and mounted velcro straps for manage cables and accessories..* 100 mm blue industrial style wheels (two with brakes).



CR412BLKMW



CR418BLKMW

50 CM RACKABLE DEPTH  
FRONT AND REAR DOUBLE RACK RAILS  
100 MM BLUE INDUSTRIAL WHEELS

### TECH INFO

CODE	UNITS	WEIGHT
CR410BLKMW	10U	27.00 kg
CR412BLKMW	12U	30.50 kg
CR415BLKMW	15U	32.50 kg
CR418BLKMW	18U	39.50 kg



## 19" PROFESSIONAL "COMBO" RACK CASES "BLKM" Series

- 19" Professional "COMBO" rack cases with 10U height adjustable mixer space, made by 5-Ply, phenolic-bond marine plywood, 9 mm thickness. Black laminated water and scratch-resistant covering. Black inner painted. Provided with recessed steel galvanized butterfly latches, recessed spring-loaded handles with rubber grip, steel ball-corner and stiffener, professional aluminium profile and industrial grade rubber feet. Front double rack rail and numbers of install rack rail screws, washers, cage nuts are included. Front and back lids foamed eggs sheet foam and mounted velcro straps for manage cables and accessories. - 45 cm rackable depth.



SA08BLKM



SA04BLKM



45 CM RACKABLE DEPTH  
HEIGHT ADJUSTABLE 10U MIXER SPACE

### TECH INFO

CODE	UNIT	WEIGHT
SA04BLKM	4U	16.50 kg
SA06BLKM	6U	19.00 kg
SA08BLKM	8U	20.80 kg
SA10BLKM	10U	21.80 kg

## 19" PROFESSIONAL "COMBO" RACK CASES WITH WHEELS "SABLMK" Series

- 19" Professional "COMBO" rack cases with 10U height adjustable mixer space, made by 5-Ply, phenolic-bond marine plywood, 9 mm thickness. Black laminated water and scratch-resistant covering. Black inner painted. Provided with recessed steel galvanized butterfly latches, recessed spring-loaded handles with rubber grip, steel ball-corner and stiffener, professional aluminium profile and industrial grade rubber feet. Front and rear double rack rails and numbers of install rack rail screws, washers, cage nuts are included. Front and back lids foamed eggs sheet foam and mounted velcro straps for manage cables and accessories. 45 cm rackable depth. 100 mm blue industrial style wheels (two with brake).



45 CM RACKABLE DEPTH  
HEIGHT ADJUSTABLE 10U MIXER SPACE  
FRONT AND REAR DOUBLE RACK RAILS  
100 MM BLUE INDUSTRIAL WHEELS

### TECH INFO

CODE	UNIT	WEIGHT
SA12BLKM	12U	35.50 kg
SA15BLKM	15U	37.00 kg
SA18BLKM	18U	42.50 kg
SA20BLKM	20U	43.50 kg

## 19" STANDARD RACK CASES

### "Special" Series

• 19" standard rack cases, made by 5-Ply, phenolic-bond marine plywood, 7 mm thickness. Black laminated water and scratch-resistant covering. Black inner painted. Provided with small steel butterfly latches, spring-loaded handles, steel ball-corner, professional aluminium profile and industrial grade rubber feet. Standard rack rails in the front and numbers of install rack rail screws, washers, cage nuts are included. . 42 cm rackable depth.



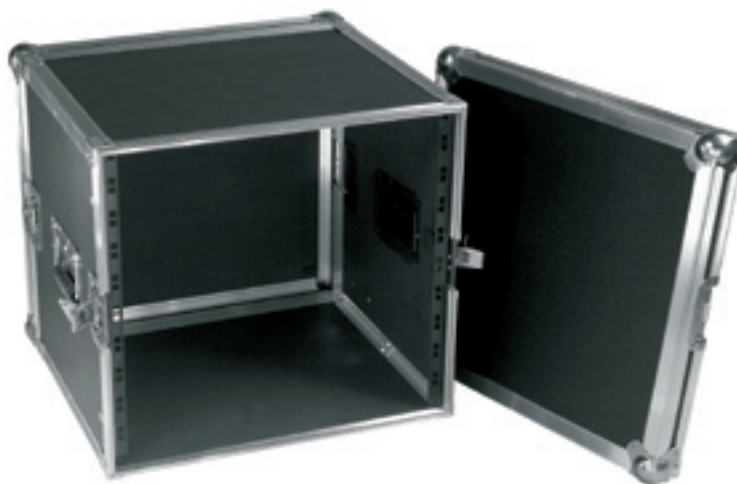
CR206S



CR203S



CR210S



42 CM RACKABLE DEPTH  
FRONT RACK RAILS  
CUSTOM ORDERS AVAILABLE

TECH INFO		
CODE	UNIT	WEIGHT
CR203S	3U	7.60 kg
CR204S	4U	8.20 kg
CR205S	5U	8.90 kg
CR206S	6U	9.50 kg
CR207S	7U	10.30 kg
CR208S	8U	11.40 kg
CR210S	10U	12.50 kg



## 19" PROFESSIONAL RACK CASES

### "Professional" Series

- 19" Professional rack cases, made by 5-Ply, phenolic-bond marine plywood, 9 mm thickness. Black laminated water and scratch-resistant covering. Black inner painted. Provided with recessed steel galvanized butterfly latches, recessed spring-loaded handles with rubber grip, steel ball-corner and stiffener, professional aluminium profile and industrial grade rubber feet. Front rack rails and numbers of install rack rail screws, washers, cage nuts are included. . 46 cm rackable depth.

CR304P



CR306P

**CUSTOM ORDER  
AVAILABLE**

46 CM RACKABLE DEPTH  
FRONT RACK RAILS  
CUSTOM ORDERS AVAILABLE

TECH INFO		
CODE	UNIT	WEIGHT
CR303P	3U	11.50 kg
CR304P	4U	12.20 kg
CR305P	5U	12.90 kg
CR306P	6U	13.90 kg
CR308P	8U	15.40 kg



## 19" PROFESSIONAL RACK CASES WITH WHEELS

### "Professional" Series

• 19" Professional rack cases with 100 mm blue industrial style wheels (two with brakes). Made by 5-Ply, phenolic-bond marine plywood, 9mm thickness. Black laminated water and scratch-resistant covering. Black inner painted. Provided with recessed steel galvanized butterfly latches, recessed spring-loaded handles with rubber grip, steel ball-corner and stiffener, professional aluminium profile and industrial grade rubber feet. Front rack rails and numbers of install rack rail screws, washers, cage nuts are included. . 46 cm rackable depth.

CR310P



CR312P



**CUSTOM ORDER  
AVAILABLE**

CR318P



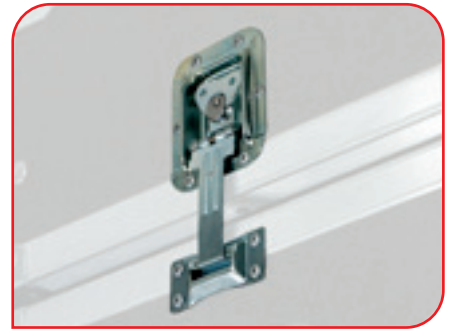
**46 CM RACKABLE DEPTH  
FRONT RACK RAILS  
CUSTOM ORDERS AVAILABLE**

#### TECH INFO

CODE	UNIT	WEIGHT
CR310P	10U	25.40 kg
CR312P	12U	26.55 kg
CR315P	15U	30.40 kg
CR318P	18U	33.55 kg



## 19" PROFESSIONAL RACK CASES WITH STACKING SYSTEM "Professional" Series



• 19" Professional rack cases provided with stacking system. Made by 5-Ply, phenolic-bond marine plywood, 9mm thickness. Black laminated water and scratch-resistant covering. Black inner painted. Provided with recessed steel galvanized butterfly latches, recessed spring-loaded handles with rubber grip, steel ball-corner and stiffener, professional aluminium profile and industrial grade rubber feet. Front rack rails and numbers of install rack rail screws, washers, cage nuts are included. .48 cm rackable depth. Available a wooden dolly with 100 mm blue industrial style wheels.

CR204PI

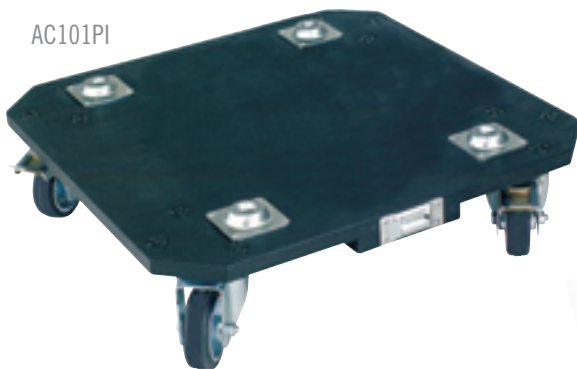
CR206PI

### AC101PI

• Professional wooden dolly with 100 mm blue industrial style wheels (two with brackes).

CR210PI

AC101PI



**CUSTOM ORDER  
AVAILABLE**



**48 CM RACKABLE DEPTH  
FRONT RACK RAILS  
CUSTOM ORDERS AVAILABLE**

TECH INFO		
CODE	UNIT	WEIGHT
CR204PI	4U	12.60 kg
CR206PI	6U	14.30 kg
CR208PI	8U	15.80 kg
CR210PI	10U	25.80 kg
CR212PI	12U	27.30 kg





## 19" PROFESSIONAL RACK CASES WITH ANTISHOCK STEEL FRAME "TOP" Series

• 19" Professional rack cases with 100 mm blue industrial style wheels (two with brakes). Made by 5-Ply, phenolic-bond marine plywood, 9mm thickness. Black laminated water and scratch-resistant covering. Black inner painted. Provided with recessed steel galvanized butterfly latches, recessed spring-loaded handles with rubber grip, steel ball-corner and stiffener, professional aluminium profile and industrial grade rubber feet. Inner steel frame with front and rear rack rails with n. 8 shock absorbing spacers. Numbers of install rack rail screws, washers, cage nuts are included - 57 cm rackable depth.

CR310TPA



## TECH INFO

CODE	UNIT	WEIGHT
CR304TPA	4U	33.10 kg
CR308TPA	8U	39.30 kg
CR310TPA	10U	44.20 kg
CR312TPA	12U	48.50 kg

57 CM RACKABLE DEPTH  
INNER STEEL FRAME WITH SHOCK ABSORBING SPACERS  
FRONT AND REAR RACK RAILS  
CUSTOM ORDER AVAILABLE



## 19" PROFESSIONAL RACK CASES WITH INNER WOODEN SHELL - "TOP" Series

• 19" Professional rack cases with 100 mm blue industrial style wheels (two with brakes). Made by 5-Ply, phenolic-bond marine plywood, 9mm thickness. Black laminated water and scratch-resistant covering. Inner painted wooden frame with front rack rails. Provided with recessed steel galvanized butterfly latches, recessed spring-loaded handles with rubber grip, steel ball-corner and stiffener, professional aluminium profile and industrial grade rubber feet. Numbers of install rack rail screws, washers, cage nuts are included. . 45 cm rackable depth.



CR312W



CUSTOM ORDER  
AVAILABLE

45 CM RACKABLE DEPTH  
RACK MOUNTS ON INTERNAL WOODEN SHELL  
CUSTOM ORDER AVAILABLE

## TECH INFO

CODE	UNIT	WEIGHT
CR312W	12U	34.70 kg
CR315W	15U	37.40 kg
CR318W	18U	40.00 kg



## 19" PROFESSIONAL RACK CASES WITH ANTISHOCK STEEL FRAME "TOP" Series

• 19" Professional rack cases with 100 mm blue industrial style wheels (two with brakes). Made by 5-Ply, phenolic-bond marine plywood, 9mm thickness. Black laminated water and scratch-resistant covering. Black inner painted. Provided recessed lids with special steel slides, recessed spring-loaded handles with rubber grip, steel ball-corner and stiffener, professional aluminium profile and industrial grade rubber feet. Upper zinc plated dishes for stacking system. Inner steel frame with front and rear rack rails provided of n. 18 shock absorbing spacers. Numbers of install rack rail screws, washers, cage nuts are included. 55 cm rackable depth.

CR514TS



**CUSTOM ORDER  
AVAILABLE**

**CUSTOM  
MODEL**

CR510TS



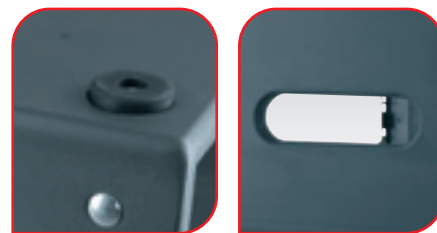
**55 CM RACKABLE DEPTH  
CUSTOM ORDER AVAILABLE**

### TECH INFO

CODE	UNIT	WEIGHT
CR510TS	10U	35.70 kg
CR512TS	12U	39.20 kg
CR514TS	14U	42.70 kg
CR516TS	16U	45.80 kg



## 19" STANDARD RACK CASES "Recording Studio" Series



- 19" Standard rack cases. Made by 5-Ply, phenolic-bond marine plywood, 15 mm thickness. Grey painted finish. Integrated handles. Numbers of install rack rail screws, washers, cage nuts are included. . 45 cm rackable depth.



CR304WH



CR306WH

**CUSTOM ORDER  
AVAILABLE**

45 CM RACKABLE DEPTH  
CUSTOM ORDERS AVAILABLE

TECH INFO		
CODE	UNIT	WEIGHT
CR304WH	4U	34.70 kg
CR306WH	6U	34.70 kg
CR308WH	8U	34.70 kg



## 19" RACK HEIGHT ADJUSTABLE MIXER CASE - "BLK" Series

- New professional height adjustable mixer case, made by 5-Ply, phenolic- bond marine plywood, 5 mm thickness. Black laminated water and scratch-resistant covering, Black foam inner padding. Equipped with "Pop-Up" ratchet system for transporting the mixer flat, then elevating it to various angles. Recessed small steel galvanized butterfly latches, recessed spring-loaded handles with rubber grip, steel ball-corner and stiffener, professional aluminium profile and industrial grade rubber feet.



**NEW**

"POP-UP" RATCHET SYSTEM

TECH INFO		
CODE	UNIT	WEIGHT
SA11BLKM	12U	5.00 kg

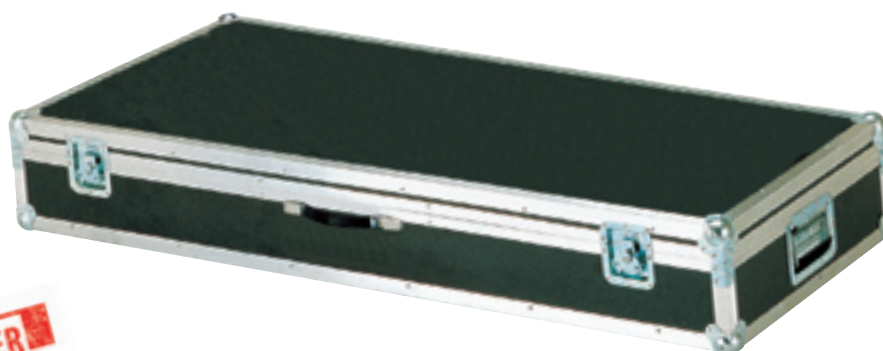


## KEYBOARD CASES

### "Special" Series

- Standard keyboard cases, made by 5-Ply, phenolic-bond marine plywood, 7 mm thickness. Black grey laminated water and scratch-resistant covering. Inner black foam padding. Provided with small recessed steel galvanized butterfly latches, steel zinc plated medium hinges, metal rubber covered handles in black colour, steel ball-corner and stiffener, professional aluminium profile and industrial grade rubber feet.

CT03S



**CUSTOM ORDER  
AVAILABLE**

CUSTOM ORDER AVAILABLE

## TECH INFO

CODE	INNER DIMENSIONS	WEIGHT
CT01S	950 x 350 x 100 mm	8.80 kg
CT02S	1050 x 360 x 120 mm	10.30 kg
CT03S	1150 x 390 x 130 mm	11.50 kg
CT04S	1250 x 400 x 140 mm	12.50 kg
CT05S	1350 x 420 x 160 mm	13.60 kg
CT06S	1400 x 450 x 200 mm	14.40 k



## KEYBOARD CASES - "Professional" Series

- Professional keyboard cases, made by 5-Ply, phenolic-bond marine plywood, 9 mm thickness. Black laminated water and scratch-resistant covering. Inner foam padding. Provided with recessed steel galvanized butterfly latches, steel zinc plated professional hinges, recessed spring-loaded handles with rubber grip, steel ball-corner and stiffener, professional aluminium profile and industrial grade rubber feet. On request, 4 "butterfly" type latches can be used, allowing the removal of the lid for playing the keyboard in the case.



**CUSTOM ORDER  
AVAILABLE**

CUSTOM ORDER AVAILABLE

## TECH INFO

CODE	INNER DIMENSIONS	WEIGHT
CT01P	950 x 350 x 100 mm	13.50 kg
CT02P	1050 x 360 x 120 mm	15.00 kg
CT03P	1150 x 390 x 130 mm	16.20 kg
CT04P	1250 x 400 x 140 mm	17.20 kg
CT05P	1350 x 420 x 160 mm	18.30 kg
CT06P	1400 x 450 x 200 mm	19.10 kg
CT07P	1450 x 500 x 250 mm	21.00 kg



## KEYBOARD CASES

### "BLKMW" Series

- Professional keyboard cases made by 5-Ply, phenolic-bond marine plywood, 9 mm thickness. Black laminated water and scratch resistant covering. High density EVA foam lining, egg sheet foam on ceiling top. Removable adjustment foam brings to customize inner length and depth. Provided with recessed steel galvanized butterfly latches, stainless piano hinges and heavy duty recessed lid stay, recessed spring-loaded handles with rubber grip, steel ball-corner and heavy duty brace, professional aluminium profile and industrial grade rubber feet. Heavy duty extrusion recessed wheels, can be easily moved.

CT06BLKMW



Check your  
keyboard size

CT07BLKMW



Ø 40 MM BUILT-IN WHEELS

#### TECH INFO

##### TECH INFO

CODE	INNER DIMENSIONS	WEIGHT
CT05BLKM	1105 x 432 x 165 mm	17.50 kg
CT06BLKM	1345 x 457 x 159 mm	21.00 kg
CT07BLKM	1485 x 457 x 159 mm	22.50 kg
Two Ø 40 mm built-in castors		

## MIXER CASES "Special" Series

• Standar mixer cases, made by 5-Ply, phenolic-bond marine plywood, 7 mm thickness. Black laminated water and scratch resistant covering and inner foam padding. Provided with small recessed steel galvanized butterfly latches, steel zinc plated professional detachable hinges, recessed spring-loaded zinc plated steel handles with rubber grip and/or steel black rubber covered. Steel ball-corner and stiffener, professional aluminium profile and industrial grade

CM09S



**CUSTOM ORDER  
AVAILABLE**



### TECH INFO

CODE	INNER DIMENSIONS	WEIGHT
CM08S	460 x 460 x 130 mm	9.40 kg
CM09S	650 x 650 x 150 mm	10.50 kg
CM10S*	970 x 680 x 180 mm	12.40 kg
CM11S*	1160 x 700 x 200 mm	15.70 kg1

\*Models provided with two Ø 50 mm built-in castors.

• Professional mixer cases, made by 5-Ply, phenolic-bond marine plywood, 10 mm thickness. Black laminated water and scratch resistant covering and inner foam padding. Provided with small/large recessed steel galvanized butterfly latches, recessed spring-loaded steel zinc plated handles with rubber grip. Steel ball-corner and stiffener, professional aluminium profile and industrial grade rubber feet. On request, for a 10% up-charge, an internal divider can be added for I/O access or for external power supplies.

## MIXER CASES "Professional" Series



**CUSTOM ORDER  
AVAILABLE**

**CUSTOM  
MODEL**

### TECH INFO

CODE	INNER DIMENSIONS	WEIGHT
CM08P	460 x 460 x 130 mm	10.20 kg
CM09P	650 x 650 x 150 mm	12.35 kg
CM10P	970 x 680 x 180 mm	18.10 kg
CM11P*	1160 x 700 x 200 mm	23.70 kg
CM12P*	1250 x 740 x 260 mm	28.60 kg
CM13P**	1560 x 760 x 280 mm	35.15 kg
CM14P**	1650 x 780 x 300 mm	40.00 kg

\* Models provided with large recessed galvanized butterfly latches.

\*\* These models use large, recessed galvanized "butterfly" latches and offer 4 x Ø 100 mm castors (two with brakes).

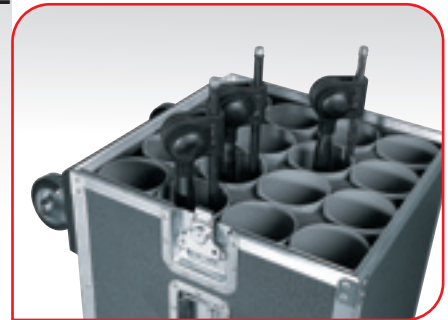




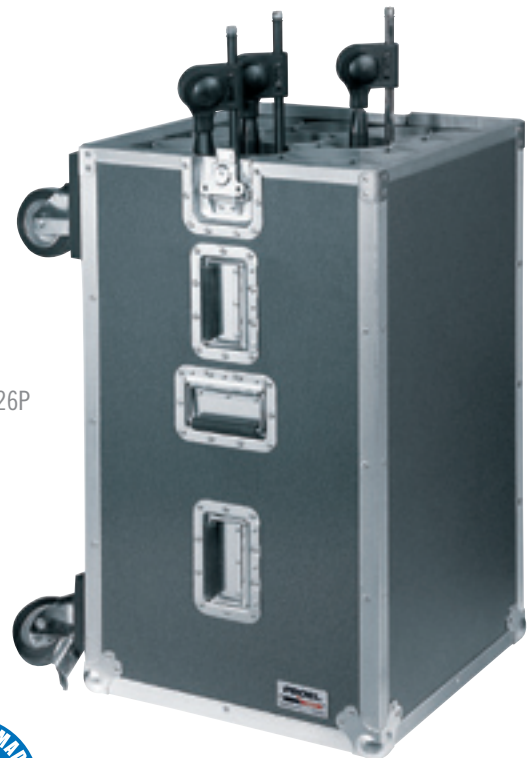
## MICROPHONE STAND CASE

**"Professional" Series**  
**MICROPHONE CASES**  
**"BLK" Series**

• Professional microphone stand case, made by 5-Ply, phenolic- bond marine plywood, 10 mm thickness. Black laminated water and scratch-resistant covering. Provided with individual protective PVC tubes for 16 stands. Provided with small recessed steel galvanized butterfly latches, recessed spring-loaded handles with rubber grip, steel ball-corner and stiffener, professional aluminium profile. 4 x Ø 100 mm blue industrial style wheels (two with brakes).



SA26P



## TECH INFO

CODE	INNER DIMENSIONS	WEIGHT
SA26P	438 x 438 x 1020 mm	38.00 kg



• New practical microphone cases, made by 5-Ply, phenolic- bond marine plywood, 5 mm thickness. Black laminated water and scratch-resistant covering, High density EVA foam lining and high density EVA foam in 50mm thickness drilled holes for microphone holding. Provided with a dedicated space for cables and accessories. Recessed small steel galvanized butterfly latches, recessed spring-loaded handles with rubber grip, steel ball-corner and stiffener, professional aluminium profile and industrial grade rubber feet.

**NEW**

SA31BLKM



## TECH INFO

CODE	NOTE	WEIGHT
SA31BLKM	CASE FOR 9 MICROPHONES	5.00 kg
SA32BLKM	CASE FOR 12 MICROPHONES	6.00 kg

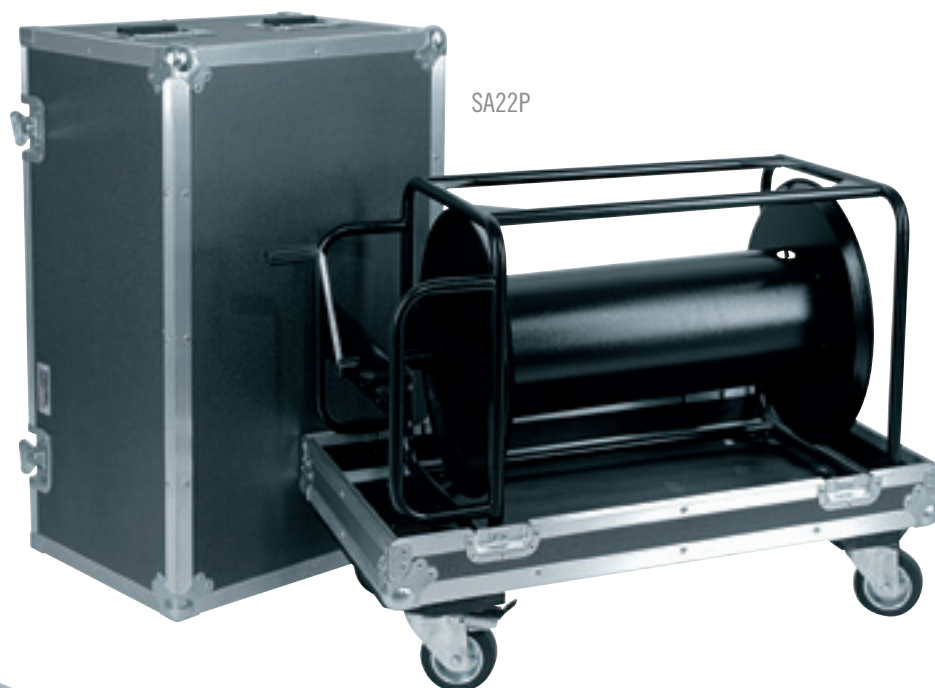
## CABLE DRUM CASES

### "Professional" Series

• Professional series of cable drum cases, made by 5-Ply, phenolic- bond marine plywood, 10 mm thickness. Black laminated water and scratch-resistant covering. BLACK inner painted. Provided with small recessed steel galvanized butterfly latches, recessed spring-loaded handles with rubber grip, steel ball-corner and stiffener, professional aluminium profile. All the models are provided with 4 x Ø 100 mm blue industrial style wheels (two with brakes)



**CUSTOM ORDER  
AVAILABLE**



SA22P

SA21P



**CUSTOM ORDERS AVAILABLE**

#### TECH INFO

CODE	INNER DIMENSIONS	WEIGHT
SA21P x AV410	470 x 470 x 565 mm	21.10 kg
SA22P x AV430	790 x 470 x 470 mm	23.80 kg
SA23P x AV400	470 x 470 x 470 mm	20.00 kga
SA24P x AV420	850 x 485 x 535 mm	26.00 kg



## DRUM CASES

### "Professional" Series

• Professional cases for drum and accessories, made by 5-Ply, phenolic-bond marine plywood, 9 mm thickness. Black laminated water and scratchresistant covering. Inner foam padding. Provided with recessed steel galvanized butterfly latches, recessed spring-loaded handles with rubber grip, steel ball-corner and stiffener, professional aluminium profile. The model CB17P features n. 2 x Ø 50 mm built-in wheels for an easy carriage. The model CB18P features n. 4 x Ø 100 mm blue industrial style wheels (two with brakes).

CB18P

**CUSTOM ORDER  
AVAILABLE**



CB17P



Ø 50 MM BUILT-IN WHEELS (CB17P)  
Ø 100 MM BLUE INDUSTRIAL STYLE WHEELS (CB18P)  
CUSTOM ORDERS AVAILABLE

## TECH INFO

CODE	INNER DIMENSIONS	WEIGHT
CB17P*	1200 x 300 x 400 mm	21.00 kg
CB18P**	1530 x 650 x 590 mm	47.30 kg

\* Model provided with 2 x Ø 50 mm built-in wheels

\*\* Model provided with 4 x Ø 100 mm blue industrial style wheels





**PROFESSIONAL  
STORAGE CASES**  
**"BLKW" Series**  
**MULTIFUNCTIONAL CASES**  
**"BLK" Series**

• New professional series of storage cases, made by 5-Ply, phenolic- bond marine plywood, 8 mm thickness. Black laminated water and scratch-resistant covering. 10mm high density EVA foam lining. Stainless steel piano hinges and heavy duty recessed lid stays are included. Provided with recessed steel galvanized butterfly latches, recessed spring-loaded handles with rubber grip, steel ball-corner and stiffener, professional aluminium profile and industrial grade rubber feet. Full piece of caster board painted black - made of 18mm plywood. All the models are provided with 4 x detachable Ø 100 mm blue industrial style wheels (two with brakes).

SL10BLKW



SL15BLKW



SL25BLKW

**NEW**

Ø 100 MM BLUE INDUSTRIAL STYLE WHEELS

**TECH INFO**

CODE	INNER DIMENSIONS	WEIGHT
SL10BLKW	600 x 400 x 500 mm	17.50 kg
SL15BLKW	800 x 400 x 500 mm	21.00 kg
SL20BLKW	800 x 600 x 500 mm	30.00 kg
SL25BLKW	1200 x 400 x 500 mm	30.50 kg

**MULTIFUNCTIONAL CASE - "BLK" Series**

• New professional multifunctional case, made by 5-Ply, phenolic- bond marine plywood, 5 mm thickness. Black laminated water and scratch-resistant covering, Black foam inner padding and egg foam on the cover. Inner customisable precutted 50mm pluck foam inserts are included, for universal storage proposal. Recessed small steel galvanized butterfly latches, recessed spring-loaded handles with rubber grip, steel ball-corner and stiffener, professional aluminium profile and industrial grade rubber feet.

SL05BLK

**NEW**

INNER CUSTOMISABLE FOAM

**TECH INFO**

CODE	INNER DIMENSIONS	WEIGHT
SL05BLK	450 x 350 x 220 mm	7.00 kg



## PROFESSIONAL STORAGE CASES "Professional" Series

• Professional series of storage cases, made by 5-Ply, phenolic- bond marine plywood, 10 mm thickness. Black laminated water and scratch-resistant covering. Provided with small recessed steel galvanized butterfly latches, recessed spring-loaded handles with rubber grip, steel ball-corner and stiffener, professional aluminium profile and industrial grade rubber feet. All the models are provided with 4 x detachable Ø 100 mm blue industrial style wheels (two with brakes)

**CUSTOM ORDER  
AVAILABLE**



SL55P

Ø 100 MM BLUE INDUSTRIAL STYLE WHEELS  
CUSTOM ORDERS AVAILABLE



SL53P



### TECH INFO

CODE	INNER DIMENSIONS	WEIGHT
SL53P	600 x 400 x 500 mm	17.50 kg
SL54P	800 x 600 x 500 mm	30.00 kg
SL55P	1200 x 400 x 500 mm	30.50 kg

• Professional multi-purpose case, made by 5-Ply, phenolic- bond marine plywood, 10 mm thickness. Black laminated water and scratch-resistant covering. Provided with large recessed steel galvanized butterfly latches, recessed spring-loaded handles with rubber grip, steel ball-corner and stiffener, professional aluminium profile. Equipped with two removable internal dividers. 4 x Ø 100 mm blue industrial style wheels (two with brakes)

## MULTIFUNCTIONAL CASE - "TOP" Series

SL54T



### SL54TS

• Removal internal dividers for SL54T.

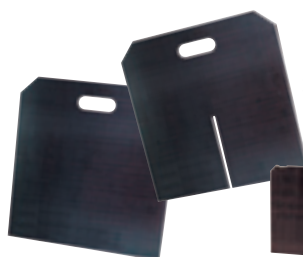
### SL54TD

• Slotted, removal internal dividers for SL54T.

### SL54TB

• Short, halving divider for SL54T (for use with SL54TD)

SL54TS



SL54TD



SL54TB



Ø 100 MM BLUE INDUSTRIAL STYLE WHEELS  
CUSTOM ORDERS AVAILABLE

### TECH INFO

CODE	INNER DIMENSIONS	WEIGHT
SL54T	1030 x 540 x 550 mm	27.00 kg

## PROFESSIONAL LCD/PLASMA CASES "BLK" Series

• New Professional series of LCD/PLASMA screen cases, made by 5-Ply, phenolic-bond marine plywood, 9 mm thickness. Black laminated water and scratch-resistant covering. High density EVA foam lining, and additional Velcro-back high density adjustment foam fits different brands gear. Storage compartments for hardware and accessories. Provided with large recessed steel galvanized butterfly latches, recessed spring-loaded handles with rubber grip, steel ball-corner and stiffener, professional aluminium profile. All the models are provided with 4 x Ø 100 mm blue industrial style wheels (two with brakes)

PLC50BLKW

**NEW**


PLC46BLKW



Ø 100 MM BLUE INDUSTRIAL STYLE WHEELS  
INNER ADJUSTABLE FOAM BLOCKS AND STRIPS  
CUSTOM ORDERS AVAILABLE

### TECH INFO

CODE	PLASMA/LCD SIZE	WEIGHT
PLC46BLKW	FROM 40" UP TO 46"	50.00 kg
PLC50BLKW	50"	62.00 kg
PLC65BLKW	65"	75 .00 kg

## AMPLIFIERS & SPEAKER CABINETS CASES " Professional " Series

• Professional series of amplifier and speaker cabinets cases, made by 5-Ply, phenolic- bond marine plywood, 9 mm thickness. Black laminated water and scratch-resistant covering. High density EVA foam lining. Provided with large recessed steel galvanized butterfly latches, recessed spring-loaded handles with rubber grip, steel ball-corner and stiffener, professional aluminium profile. All the models can be provided with 4 x Ø 80 / 100 mm blue industrial style wheels (two with brakes)



**CUSTOM ORDER  
AVAILABLE**



Ø 80/Ø 100 MM BLUE INDUSTRIAL STYLE WHEELS  
CUSTOM ORDERS AVAILABLE

TECH INFO		
CODE	INNER DIMENSION - W x D x H	WEIGHT
CA12P	530 x 300 x 480 mm	19.10 kg
CA13P	580 x 350 x 520 mm	21.30 kg
CA14P	630 x 380 x 6400 mm	23.50 kg
CA15P	690 x 420 x 770 mm	27.30 kg
CA16P	770 x 480 x 850 mm	31.00 kg



## DJ CASES

### "Coffin" Series



SD73PRODJ



#### SD73PRODJ SD83PRODJ

• Professional case for 2 x CD players and 1 Dj MIXER, made by 5-Ply, phenolic- bond marine plywood, 8 mm thickness. Black laminated water and scratch-resistant covering. Inner foam padding. Provided with recessed steel galvanized butterfly latches, recessed spring-loaded handles with rubber grip, steel ball-corner and stiffener, professional aluminium profile and industrial grade rubber feet.

SD73PRODJ



SD83PRODJ

**CUSTOM ORDER  
AVAILABLE**

**NEW**

SD83PRODJ



CDJ100/200 OR SIMILAR  
DJM400/600 OR SIMILAR

#### TECH INFO

CODE	INNER DIMENSIONS	WEIGHT
SD73PRODJ	795 x 345 x 115 mm	7.80 kg
SD83PRODJ	795 x 450 x 115 mm	9.20 kg



## DJ CASES

### "Coffin" Series

#### SD85PRODJ

• Professional DJ Coffin case that holds different large format CD players and 12" DJ mixer. Made by 5-Ply, phenolic- bond marine plywood, 9 mm thickness. Black laminated water and scratch-resistant covering. Inner foam padding, provided with extra Velcro-back high density adjustment foam fits different brands gear. Equipped with recessed steel galvanized butterfly latches, recessed spring-loaded handles with rubber grip, steel ball-corner and stiffener, professional aluminium profile and industrial grade rubber feet. Heavy duty extrusion recessed wheels.

SD85PRODJ


**NEW**


SD85PRODJ

CDJ800 /1000 OR SIMILAR  
DJM600/800 OR SIMILAR

#### TECH INFO

CODE	NOTE	WEIGHT
SD85PRODJ*	FOR CDJ800/1000 - DJM600/800	18.50 kg

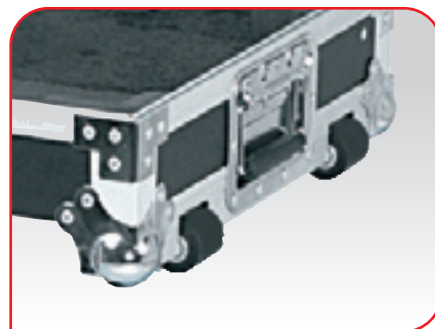
\* Model provided with Ø 40 mm built-in wheels

## DJ CASES

### "Professional Coffin" Series

#### SD77PRODJ SD87PRODJ

• Professional DJ coffin, for two turntable and 1 DJ mixer, made by 5-Ply, phenolic-bond marine plywood, 9 mm thickness. Black laminated water and scratch-resistant covering. Inner high density EVA padding. Provided with recessed steel galvanized butterfly latches, recessed spring loaded handles with rubber grip, steel ball-corner and stiffener, professional aluminium profile. Heavy duty extrusion recessed wheels. Available with 12" mixer space (SD77PRODJ) and 19" slanted rack mixer space (SD87PRODJ).



SD77PRODJ



SD87PRODJ


**NEW**

12" MIXER SPACE - SD77PRODJ  
19" SLANTED RACK MIXER SPACE - SD87PRODJ  
Ø 40 MM BUILT-IN WHEELS

#### TECH INFO

CODE	NOTE	WEIGHT
SD77PRODJ*	12" MIXER SPACE	29.15 kg
SD87PRODJ *	19" RACK SLANTED MIXER SPACE	31.15 kg

\* Models provided with Ø 40 mm built-in wheels

## DJ CASES

## Professional Turntable Case

## SD82PRODJ

• Professional turntable case, made by 5-Ply, phenolic-bond marine plywood, 8 mm thickness. Black laminated water and scratch-resistant covering. Inner high density foam padding to fit most popular turntables (Technics SL1200 and similar). Provided with recessed steel galvanized butterfly latches, strap handle with rubber grip, steel ball-corner and stiffener, professional aluminium profile and industrial grade rubber feet. Detachable cover and low profile tray design for operating the gear without take it out of the case.



SD82PRODJ

INNER FOAM PADDING  
LOW PROFILE BASE

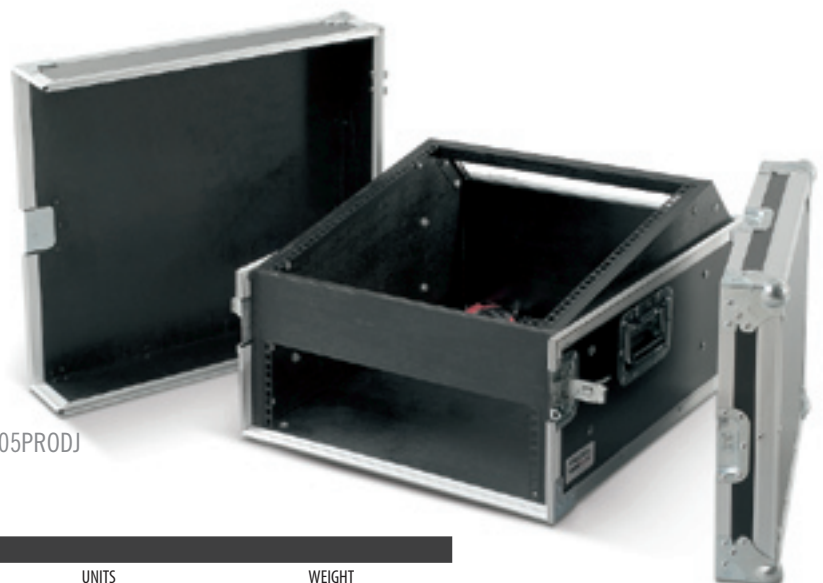
## TECH INFO

CODE	INNER DIMENSIONS	WEIGHT
SD82PRODJ	450 X 350 X 170	7.80 kg

## DJ CASES - "COMBO BLK" Series

## SA05PRODJ

• 19" Professional rack "COMBO" case with 10U upper mixer space, made by 5-Ply, phenolic-bond marine plywood, 9 mm thickness. Black laminated water and scratch-resistant covering. Black inner painted. Provided with recessed steel galvanized butterfly latches, recessed spring-loaded handles with rubber grip, steel ball-corner and stiffener, professional aluminium profile and industrial grade rubber feet. 3U Front - 10U Top and 2U Rear rack rail with complete set of screws, washers and nuts.



SA05PRODJ

10" SLANTED MIXER SPACE

## TECH INFO

CODE	UNITS	WEIGHT
SA05PRODJ	3U - 10U - 2U	23.15 kg

## DJ CASES

### Mixer Cases

## DJ ACCESSORIES

### Laptop stand

#### SD78PRODJ SD79PRODJ

• Professional slanted rack cases for DJ mixer, 9U DEPTH. 10" AND 19" width version available. Made by 5-Ply, phenolic-bond marine plywood, 8 mm thickness. Black laminated water and scratch-resistant covering. Provided with standard steel galvanized latches, recessed spring-loaded handles. Aluminium rack rail, steel ball corner, professional aluminium profile and industrial grade rubber feet.



11" SLANTED RACK MIXER SPACE - SD78PRODJ  
19" SLANTED RACK MIXER SPACE - SD79PRODJ

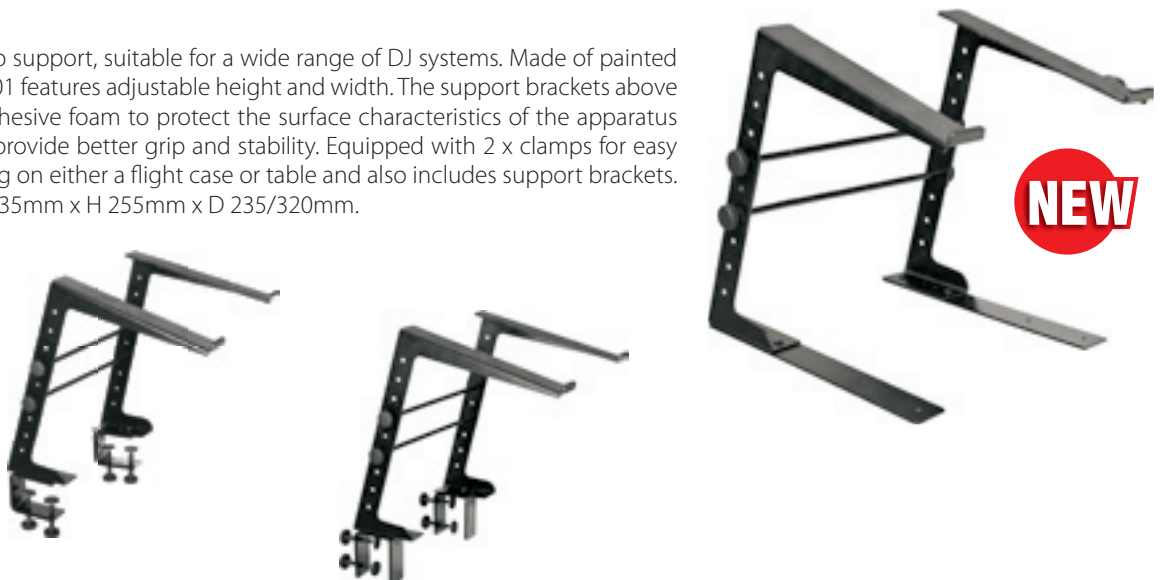
#### TECH INFO

CODE	NOTE	WEIGHT
SD78PRODJ	257 X 445 X 190 mm	7.50 kg
SD79PRODJ	453 X 445 X 190 mm	10.00 kg

## DJ ACCESSORIES - "LAPTOP STAND"

#### LTS001

• New PROEL laptop support, suitable for a wide range of DJ systems. Made of painted black steel, the LTS001 features adjustable height and width. The support brackets above are covered with adhesive foam to protect the surface characteristics of the apparatus in use as well as to provide better grip and stability. Equipped with 2 x clamps for easy and secure mounting on either a flight case or table and also includes support brackets. Dimensions: L 235/335mm x H 255mm x D 235/320mm.





## DJ CASES

### CDJ Player & Mixer Cases

#### SDCDJ01

• Professional single CD player case that holds different large format CD players like PIONEER CDJ800/CDJ1000 and similar. Made by 5-Ply, phenolic-bond marine plywood, 8 mm thickness. Black laminated water and scratch-resistant covering. Inner foam padding, provided with extra Velcro-back high density adjustment foam fits different brands gear. Equipped with recessed steel galvanized butterfly latches, recessed spring-loaded handle with rubber grip, steel ball-corner and stiffener, professional aluminium profile and industrial grade rubber feet.

**NEW**



SDCDJ01

#### SDDJM01

• Professional DJ mixer case that holds different large format DJ mixers like PIONEER DJM600/DJM800 and similar. Made by 5-Ply, phenolic-bond marine plywood, 8 mm thickness. Black laminated water and scratch-resistant covering. Inner foam padding, provided with extra Velcro-back high density adjustment foam fits different brands gear. Equipped with recessed steel galvanized butterfly latches, recessed spring-loaded handle with rubber grip, steel ball-corner and stiffener, professional aluminium profile and industrial grade rubber feet.

**NEW**



SDDJM01

CDJ800/1000 FITTINGS - SDCDJ01  
DJM600/800 - SDDJM01

TECH INFO		
CODE	NOTE	WEIGHT
SDCDJ01	CDJ800/1000	7.6 kg
SDDJM01	DJM600/800	7.2 kg

## DJ CASES

### LP Case

#### SD60PRO

• Aluminium reversible angled case for 80 LPs.  
Available colors: Aluminium (AL), Black (BK), Blue (BL), Red (RD). Master pack: 1 pc.



SD60PROBK



SD60PROBL



SD60PRORD



SD60PROAL

#### SD68PRO

• Aluminium reversible case for 80 LPs.  
Available colors: Aluminium (AL), Black (BK), Blue (BL), Red (RD). Master pack: 1 pc.



SD68PROBK



SD68PROBL



SD68PRORD



SD68PROAL

## DJ CASES

### LP Case

#### SD63PRO

• Aluminium case for 80 LPs. Available colors and textures: Aluminium (AL), Black (BK), Blue (BL), Diamond (DM), Hologram (PH), Red (RD). Master pack: 1 pc.



SD63PROBK



SD63PROPH



SD63PRODM



SD63PROBL



SD63PROAL



SD63PRORD

## CD cases

#### SD64PRO

• Aluminium cases for 60 CDs in jewel boxes or 180 CDs with sleeve. Available colours: Aluminium (AL), Black (BK), Blue (BL), Diamond (DM), Hologram (PH), Red (RD). Master pack: 1 pc.



SD64PROAL



SD64PROPH



SD64PROBK



SD64PRODM



SD64PRORD



SD64PROBL



SD62PROAL



SD62PRODM



SD62PROBK



SD62PROPH

## Turntables case

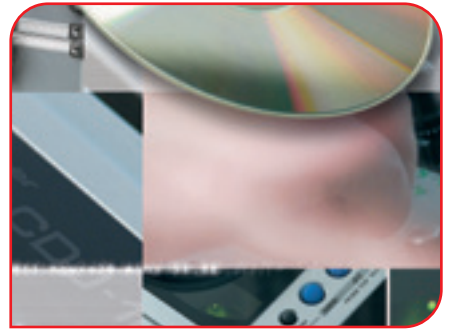
#### SD62PRO

• DJ Line aluminium turntable case. Available colours: Aluminium (AL), Black (BK), Diamond (DM), Hologram (PH). Master pack: 1 pc.



## DJ CASES

## CD Cases - LP Cases - MIC Case

**SD65PRO**

• Aluminium cases for 100 CDs in jewel boxes or 290 CDs with sleeve. Available colours: Aluminium (AL), Black (BK), Hologram (PH), Red (RD). Master pack: 1 pc.

SD65PRORD



SD65PROAL



SD65PROPH



SD65PROBK

**SD67PRO**

• Aluminium LP cases with trolley and accessories/cables space inside. Available colours: Black (BK), Diamond (DM). Master pack: 1 pc.



SD67PROAL



SD67PROBK

**SD70PROBK (12 MIC)****SD71PROBK (24 MIC)**

• Aluminium case for 12/24 microphones and accessories/cables space inside. Available in Black (BK). Master pack: 1 pc.



SD70PROBK



SD71PROBK



## MULTIFUNCTIONAL CASES

### "SD" Series

#### SD80PROBK

- Aluminium multifunctional case with inner customisable foam. Available in Black (BK). Master pack: 1 pc.



SD80PROBK



#### TCASEPROBK

- Aluminium tool case with customisable foam. Available in Black (BK). Master pack: 1 pc.

TCASEPROBK



## FLIGHT CASES

### Accessories

**AC101**

€ 182,51

• Skate con ruote ø 100 mm. (n. 2 girevoli e n. 2 girevoli con freno); dimensioni: 610 x 515 x 18 mm. Peso: 6.6 Kg. Volume: 0.051 m3.

**AC102F**

€ 33,61

• Ruota girevole ø 80 mm., doppio cuscinetto a sfera, freno a doppia azione, corpo in acciaio zincato 26 mm. Battistrada in gomma nera. Altezza: 110 mm. Confezione standard: 2 pezzi.

**AC102G**

€ 16,98

• Ruota girevole ø 80 mm., doppio cuscinetto a sfera, senza freno corpo in acciaio zincato 26 mm. Battistrada in gomma nera. Altezza: 110 mm. Confezione standard: 2 pezzi.

**AC103F**

€ 34,45

• Ruota girevole ø 100 mm., doppio cuscinetto a sfera, freno a doppia azione, corpo in acciaio zincato 26 mm. Battistrada in gomma nera. Altezza: 125 mm. Confezione standard: 2 pezzi.

**AC103G**

€ 17,97

• Ruota girevole ø 100 mm., doppio cuscinetto a sfera, senza freno, corpo in acciaio zincato 26 mm. Battistrada in gomma nera. Altezza: 125 mm. Confezione standard: 2 pezzi.

**AC103FS**

€ 49,55

• Ruota girevole ø 100 mm., doppio cuscinetto a sfera, freno a doppia azione, corpo in acciaio zincato 26 mm. Battistrada in gomma resilex blu. Altezza: 125 mm. Confezione standard: 2 pezzi.

**AC103GS**

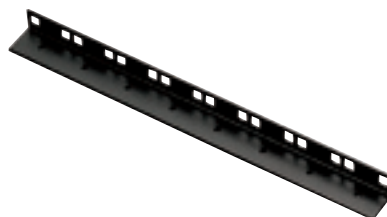
€ 33,86

• Ruota girevole blu ø 100 mm., doppio cuscinetto a sfera, senza freno, corpo in acciaio zincato 26 mm. Battistrada in gomma resilex blu. Altezza: 125 mm. Confezione standard: 2 pezzi.

**AC107**

€ 9,90

• Montanterack in acciaio verniciato a polvere nera. Forato secondo standard internazionali. Lunghezza: 2 metri.

**AC107D**

€ 60,75

• Doppio montante rack in acciaio verniciato a polvere nera. Forato secondo standard internazionali. Lunghezza: 2 metri.



## FLIGHT CASES

### Accessories

**AC109F**

€ 1,94

• Angolare quadrato con rinforzo. - raggio interno 2.5 mm. Acciaio zincato 1mm. Fori ø 5.2 mm. Confezione standard: 4 pezzi.

**AC110**

€ 2,37

• Angolare bombato piccolo a tre gambe, 1 foro per lato, Acciaio zincato 1.2 mm. Fori ø 4.2 mm. Confezione standard: 4 pezzi.

**AC111**

€ 1,53

• Angolare bombato medio a tre gambe. Acciaio zincato 1.5 mm. Fori ø 5.1 mm. Confezione standard: 4 pezzi.

**AC111S**

€ 3,10

• Angolare bombato piccolo a tre gambe impilabile. Acciaio Zincato 1.5 mm. Fori ø 5 mm. Confezione standard: 4 pezzi.

**AC111R**

€ 2,28

• Angolare bombato medio + rinforzo per coperchio 52 mm. in acciaio zincato 1.5 mm. Fori ø 5.1. confezione standard: 4 pezzi.

**AC112**

€ 3,08

• Angolare bombato grande in acciaio zincato 1.5 mm. Fori ø 5.1. confezione standard: 4 pezzi.

**AC112S**

€ 3,68

• Angolare bombato grande a tre gambe impilabile. Acciaio Zincato 2 mm. Fori ø 5 mm. Confezione standard: 4 pezzi.

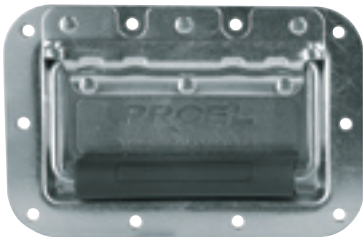


## FLIGHT CASES

### Accessories

#### AC113 € 9,16

• Maniglia ad incasso con ritorno a molla, impugnatura larga e lamina rinforzata nel piatto in acciaio profondo 8 mm. In acciaio zincato con impugnatura in PVC nero. Fori ø 5.1. Confezione standard: 2 pezzi.



#### AC113BK € 13,13

• Maniglia ad incasso con ritorno a molla, impugnatura larga e lamina rinforzata nel piatto in acciaio profondo 8 mm. In acciaio zincato nero con impugnatura in PVC nero. Fori ø 5.1. Confezione standard: 2 pezzi.



#### AC113SV € 8,19

• Maniglia con ritorno a molla, impugnatura larga e lamina rinforzata senza piatto. In acciaio zincato nero con impugnatura in PVC nero. Fori ø 5.1 mm. Confezione standard: 2 pezzi.



#### AC113PF € 3,41

• Piastra di rinforzo per AC113 - AC113BK. In acciaio zincato 1 mm. Fori ø 5.1 mm. Confezione standard: 2 pezzi.



#### AC114 € 4,51

• Maniglia media a striscia gommata nera con anima in acciaio, lamine in acciaio con agganci nichelati. Fori ø 5.1. Confezione standard: 2 pezzi.



#### AC114G € 4,95

• Maniglia grande a striscia gommata nera con anima in acciaio, lamine in acciaio con agganci neri. Fori ø 5.1 mm. Confezione standard: 2 pezzi.



#### AC115P € 1,79

• Maniglia ad incasso in plastica nera opaca. Confezione standard: 2 pezzi.



#### AC115DN € 6,56

• Maniglia media ad incasso in acciaio verniciato a polvere colore nero goffrato. Fori ø 5.6mm. Confezione standard: 2 pezzi.



#### AC115DP € 4,57

• Maniglia media ad incasso in nylon (solo 1/3 del peso della maniglia simile in acciaio). Fori ø 4.8 mm. Confezione standard: 2 pezzi.





## FLIGHT CASES

### Accessories

#### AC116 € 4,46

• Chiusura a leva con chiave, in acciaio cromato. Fori  $\varnothing$  3.5 mm. Confezione standard: 4 pezzi.



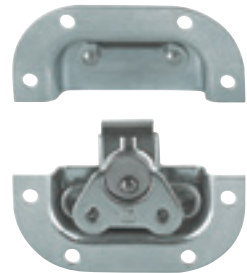
#### AC117 € 13,02

• Chiusura a farfalla media montata su vaschetta, in acciaio zincato. Profondità 12 mm. Fori  $\varnothing$  5.1 Confezione standard: 2 pezzi.



#### AC117L € 13,32

• Chiusura a farfalla piccola montata su vaschetta ultra-compatta in acciaio zincato. Profondità 10 mm. Fori  $\varnothing$  4.2 mm. Confezione standard: 2 pezzi.



#### AC118 € 13,56

• Chiusura a farfalla piccola montata su vaschetta in acciaio zincato profondità 9 mm. Fori  $\varnothing$  5.1 Confezione standard: 2 pezzi.



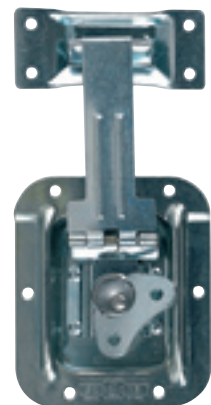
#### AC118L € 20,84

• Chiusura a farfalla piccola con predisposizione a lucchetto, montata su vaschetta in acciaio zincato profondità 9 mm. Fori  $\varnothing$  5.1 Confezione standard: 2 pezzi.



#### AC118E € 39,15

• Chiusura a farfalla con leva esterna + aggancio superiore in acciaio zincato. Fori  $\varnothing$  5.1 Confezione standard: 2 pezzi.



#### AC119 € 30,77

• Chiusura a farfalla grande montata su vaschetta in acciaio zincato profondità 18 mm. Fori  $\varnothing$  5.1 Confezione standard: 2 pezzi.



#### AC119L € 27,30

• Chiusura a farfalla grande con predisposizione a lucchetto montata su vaschetta in acciaio zincato profondità 18 mm. Fori  $\varnothing$  5.1 mm. Confezione standard: 2 pezzi.



## FLIGHT CASES

### Accessories

**AC120**

€ 0,42

• Rinforzo piccolo in acciaio zincato 1.2 mm. Fori  $\varnothing$  5.1 mm. - Angolo retto. Confezione standard: 4 pezzi.

**AC120Z**

€ 0,68

• Rinforzo medio in acciaio zincato 1.2 mm. Fori  $\varnothing$  4 mm. - Angolo retto. Confezione standard: 4 pezzi.

**AC121**

€ 0,74

• Rinforzo grande in acciaio zincato 1.2 mm. Fori  $\varnothing$  5.1 mm. - Angolo retto. Confezione standard: 4 pezzi.

**AC121G**

€ 1,26

• Rinforzo grande in acciaio zincato a 6 fori 1.2 mm. Fori  $\varnothing$  5.1 mm. - Angolo retto. Confezione standard: 4 pezzi.

**AC123**

€ 2,87

• Cerniera media a reggicoperchio in acciaio nichelato 1 mm. Fori  $\varnothing$  4 mm. Confezione standard: 2 pezzi.

**AC123Z**

€ 3,61

• Cerniera grande a reggicoperchio in acciaio zincato 1.2 mm. Fori  $\varnothing$  5 mm. Confezione standard: 2 pezzi.

**AC124**

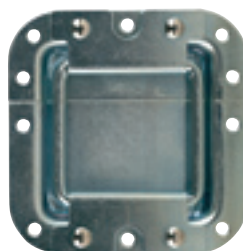
€ 3,91

• Cerniera sganciabile ultrasensibile in acciaio temperato zincato 2.2 mm. Fori  $\varnothing$  5 mm. Confezione standard: 2 pezzi.

**AC125**

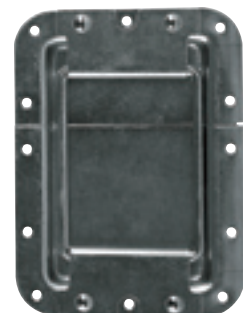
€ 8,32

• Reggicoperchio medio fisso ad incasso in acciaio zincato. Fori  $\varnothing$  5.1 mm. Confezione standard: 2 pezzi.

**AC126**

€ 9,90

• Reggicoperchio grande fisso ad incasso in acciaio zincato. Fori  $\varnothing$  5.1 mm. Confezione standard: 2 pezzi.



## FLIGHT CASES

### Accessories

**AC127SP** € 13,97  
**AC127SG** € 16,75

• Reggicoperchio a slitta in acciaio.

AC127SP - Estensione regolabile da 141 mm fino a 313 mm. / AC127SG Estensione regolabile da 214 mm fino a 354 mm. Confezione standard: 2 pezzi.



ACD127SP



ACD127SG

**AC129P** € 6,75

• Vaschetta con asole verticali per ventilazione in acciaio zincato. Dimensioni 102 x 112 mm. fori ø 5.1 mm. Confezione standard: 2 pezzi.



**AC128** € 5,91

• Vaschetta cieca in acciaio zincato. Dimensioni: 89 x 130 mm. fori ø 5 mm. Confezione standard: 2 pezzi.



**AC129** € 9,65

• Vaschetta con asole verticali per ventilazione in acciaio zincato. Dimensioni 126 x 179 mm. fori ø 5.1 mm. Confezione standard: 2 pezzi.



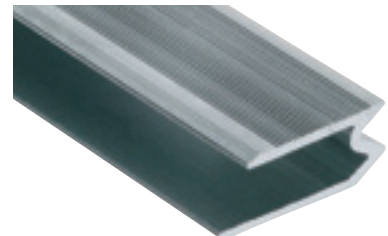
**AC129H** € 6,35

• Vaschetta con asole orizzontali per ventilazione in acciaio zincato. Dimensioni: 259 x 63.5 mm. fori ø 5 mm. Confezione standard: 2 pezzi.



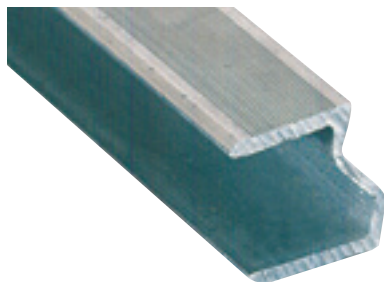
**AC131** € 3,27

• Profilo reversibile in alluminio per pannello 7 mm. Lunghezza: 2 metri.



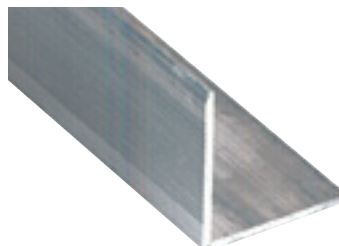
**AC132** € 3,51

• Profilo reversibile in alluminio per pannello 10 mm. Lunghezza: 2 metri.



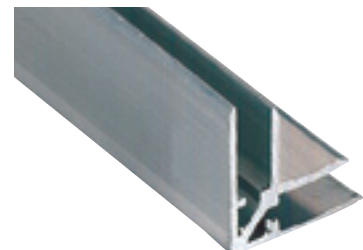
**AC133** € 2,63

• Profilo angolare semplice in alluminio 22 x 22 mm. Lunghezza: 2 metri.



**AC134** € 7,18

• Profilo angolare doppio in alluminio per pannello 7 mm. Lunghezza: 2 metri.

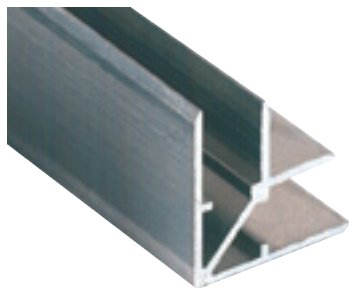


## FLIGHT CASES

### Accessories

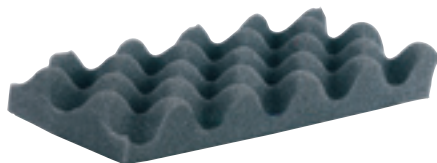
#### AC135 € 7,57

- Profilo angolare doppio in alluminio per pannello 10,9 mm. Lunghezza: 2 metri.



#### AC138 € 48,76

- Spugna bugnata grigia adesiva. Spessore: 30 mm. Altezza rotolo: 1500 mm.

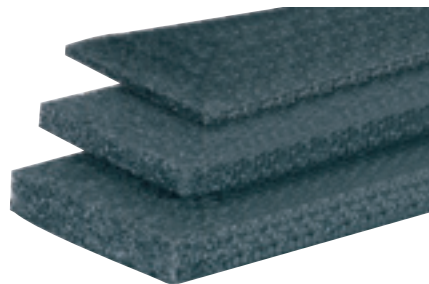


#### AC139 € 13,81

#### AC140 € 18,36

#### AC141 € 32,33

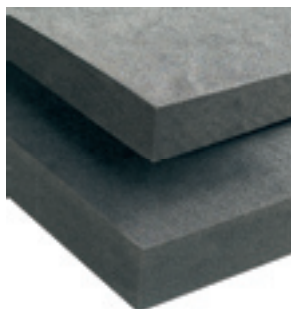
- Rivestimento in spugna con adesivo per custodie. Poliestere grigio antracite. Spessore 5 (AC139), 10 (AC140) e 15 mm (AC141). Altezza rotolo: 1220 mm.



#### AC142 € 46,50

#### AC14250 € 93,60

- Rivestimento per custodie in ethafoam ad alta densità di colore grigio antracite. Disponibile nello spessore 30 mm (AC142) e 50 mm (AC14250). Larghezza foglio 1000 mm.



#### AC104 € 0,26

#### AC105 € 0,16

- AC104: Dado ingabbiato. Confezione standard: 12 pezzi. AC105: Dado quadrato per barra rack scorrevole. Confezione standard: 12 pezzi.

AC104



AC105



#### AC106 € 0,16

#### AC106A € 0,16

#### AC106B € 0,16

- AC106: Vite zincata nera 6 x 10 mm. Confezione standard: 12 pezzi. AC106A: Vite zincata 6 x 16 mm. Confezione standard: 12 pezzi. AC106B: Vite zincata nera 6 x 25 mm. Confezione standard: 12 pezzi.



#### AC106C € 0,16

- Rondella ad incasso in plastica nera. Confezione standard: 12 pezzi.



#### KIT12 € 5,98

- Kit di montaggio rack, composto da n. 12 AC104, n. 12 AC106 e n. 12 AC106C.



#### KIT12B € 6,40

- Kit di montaggio rack, composto da n. 12 AC104, n. 12 AC106B e n. 12 AC106C.





## FLIGHT CASES

### Accessories

**AC165P**

€ 0,58

• Piedino nero in plastica 30 mm. Altezza: 13 mm. Confezione standard: 4 pezzi.

**AC166**

€ 0,74

**AC166A**

€ 0,74

• AC166: Piedino nero in gomma 38 mm con inserto in acciaio. Altezza: 10 mm. AC166A: Piedino nero in gomma 38 mm. Altezza: 15 mm. Confezione standard: 4 pezzi.



AC166



AC166A

**AC167**

€ 2,63

• Piedino da impilaggio maschio in acciaio zincato 2.4 mm. Fori ø 5.1. Confezione standard: 4 pezzi

**AC168**

€ 2,87

• Piedino da impilaggio femmina in acciaio zincato 2.4 mm. Fori ø 5.1. Confezione standard: 4 pezzi.

**AC169**

€ 2,52

• Golfare in acciaio zincato nero. AC169 = MA10. Confezione standard: 1 pezzo.



AC169

**AC169A**

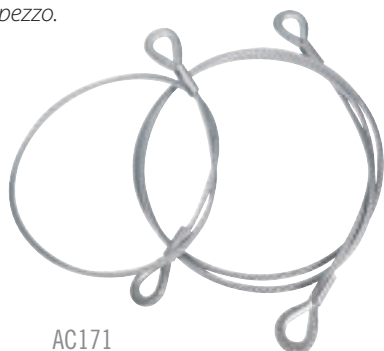
€ 7,04

• Golfare "francese" in acciaio zincato nero MA10. Confezione standard: 1 pezzo.

**AC171**

€ 14,85

• Cavo in acciaio inossidabile lunghezza complessiva: 750 mm. Confezione standard: 1 pezzo.



AC171

**AC172E**

€ 66,15

• Cavo in acciaio inossidabile ø 6 mm completo di 2 ganci doppi ad aggancio rapido. Lunghezza complessiva: 360 mm. Confezione standard: 1 pezzo.

**AC173**

€ 7,90

• Moschettone di aggancio in acciaio zincato per AC171 e AC172. Confezione standard: 1 pezzo.

**AC172**

€ 17,55

• Cavo in acciaio inossidabile lunghezza complessiva: 1500 mm. Confezione standard: 1 pezzo.

AC172

## FLIGHT CASES

### Accessories

**AC174**

€ 24,47

• AC174: Anello di trazione a molla dotato di vaschetta. Confezione standard: 1 pezzo.

**AC177**

€ 14,65

• Perno singolo volante in acciaio per binario ad aggancio rapido. Confezione standard: 1 pezzo.

**AC178**

€ 18,90

• Perno doppio volante in acciaio per per binario ad aggancio rapido. Confezione standard: 1 pezzo.

